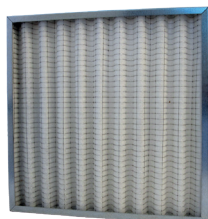


## GENERAL VENTILATION FILTERS



**Media Pads & Rolls**

- Synthetic and Fibreglass media available
- Available in a range of thicknesses
- G3, G4 rating



**Metal Framed Filters**

- Flat panel and v-form filters
- Available in a range of sizes and depths
- G3, G4 rating



**Aeropleat III**

- Medium efficiency pleated filter
- 25, 50, 100mm nominal depths
- G4 rating



**30/30**

- Medium efficiency pleated filter with superior dust holding
- 25, 50, 100mm nominal depths
- G4 rating



**AP-Thirteen**

- Medium efficiency pleated filter
- 50, 100mm nominal depths
- MERV 13 rating



**Airopac Green**

- High efficiency pleated filter
- 100mm nominal depth
- ePM10, ePM1 rating



**EcoPleat**

- High efficiency pleated filter
- 50, 100mm nominal depth
- M6, F7, F8 rating
- ePM10, ePM1 rating



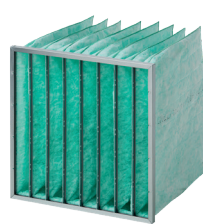
**Hi-Cap**

- Medium efficiency multi pocket bag filter
- G4 rating



**S-Flo**

- Medium efficiency multi pocket bag filter
- MERV 11 rating



**Hi-Flo**

- High efficiency multi pocket bag filter
- M5, M6, F7, F8, F9 rating
- ePM10, ePM2.5, ePM1 rating



**Opakfil**

- High efficiency compact v-shaped filter
- M6, F7, F8, F9 rating
- ePM10, ePM1 rating

## EPA, HEPA & ULPA FILTERS



**Megalam**

- High efficiency HEPA/ULPA filter
- Gasket, gel seal or knife edge
- Individually tested
- E11, H13, H4, U16 rating



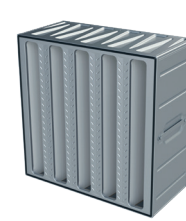
**Absolute C / D**

- High efficiency HEPA filter
- Gasket or gel seal
- Individually tested
- E11, H13, H14 rating



**Absolute VGHF**

- High efficiency v-shaped HEPA filter
- Gasket seal
- E10, H13 rating

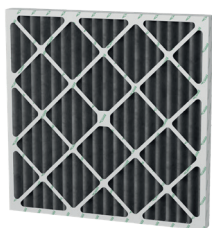


**Absolute V**

- High efficiency v-shaped HEPA filter
- Steel frame
- Gasket seal
- E10, E11, E12, H13, 14 rating

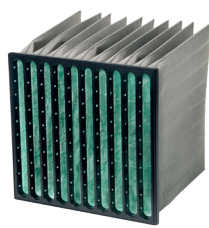


## MOLECULAR FILTERS



**CityPleat**

- Premium prefilter with particulate and molecular media
- 50, 100 nominal depths
- G4 rating



**City-Flo**

- Premium multi pocket bag filter with particulate and molecular media
- F7 rating
- ePM1 rating



**CityCarb / CitySorb**

- Premium compact v-shaped filter with particulate and molecular media
- F7 rating
- ePM1 rating



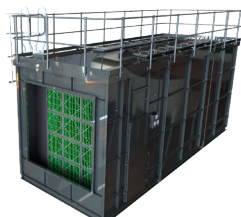
**CamCarb VG**

- Compact, refillable, non-corrosive v-cell molecular filter
- Various media options available



**CamCarb CG**

- Corrosion resistant, cylindrical molecular filter
- Various media options available



**ProCarb**

- Deep bed molecular filtration units
- Options for supply and exhaust applications
- Various media options available



**Activated Carbon**

- Molecular filtration media
- Available in various blends
- Impregnated carbon also available for special applications



**Activated Alumina**

- Molecular filtration media
- Available in various blends

## AIR CLEANERS & AIR PURIFIERS



**City Touch**

- Portable air purifier for small rooms
- Pre filter, VIC filter, EPA filter



**CC 410**

- Concealed air cleaner for small to medium rooms
- Pre filter, molecular filter, HEPA filter



**CC 1700 / CC 2100**

- In-room air cleaners for medium to large areas
- Removal of VOCs, gases
- Pre filter, molecular filter, HEPA filter



**CC 6000**

- In-room industrial air cleaner for large, dusty environments
- Pre filter, molecular filter, HEPA filter

## DUST, FUME & MIST COLLECTORS



**Gold Series X-Flo**

- Best-in-class dust collection system
- Customisable modular design
- Suitable for a large range of dust applications



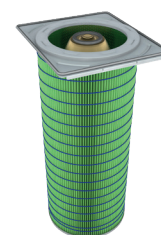
**Vortex / Venturi**

- High efficiency wet scrubbers
- Safe separation in application involving sparks, explosive, sticky or flammable dust



**Zephyr III**

- Portable air cleaner for dust and fume collection
- Suitable for capturing, welding and soldering fumes and grinding dust



**Gold Cone**

- Premium dust collector cartridge filter
- Features HemiPleat technology for maximum dust release when pulsed

## HOUSINGS, FRAMES & LOUVRES



**Kaire**

- Low capital cost kitchen exhaust solution
- Light to heavy cooking applications
- 3 stage particulate filtration



**PowerClean**

- Robust, large-scale electrostatic precipitator
- All types of cooking applications
- 4 stage particulate filtration



**CamContain**

- Gastight bag-in/bag-out filter housing
- Suitable for radioactive, toxic or biological applications



**CamSafe**

- Modular, gastight bag-in/bag-out filter housing
- Suitable for hospital, pharmaceutical or biological applications



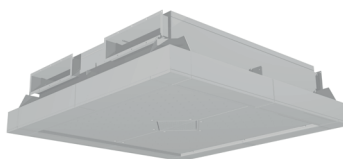
**CleanSeal / Pharmaseal**

- Fully welded terminal HEPA housing
- Supply and exhaust air options
- Gasket or gel seal



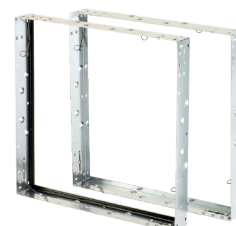
**CamHosp**

- Modular, terminal filter housing for operating rooms
- Guaranteed airtight plenum
- Suits standard H14 gasket seal HEPA filters



**Focus**

- Modular ultra clean ventilation system for operating theatres
- Gel seal HEPA/ULPA filters
- Central duct for operating table light



**Filter Holding Frames**

- Type 8 and universal filter holding frames available in various sizes
- Frame fasteners also available

## TURBOMACHINERY FILTERS



**30/30 GT**

- Rigid, reinforced pleated filter with superior dust holding capacity
- 100mm nominal depth
- G4 rating



**Cam-Flo**

- High strength, high efficiency multi pocket bag filter
- M6, F7 rating
- ePM10, ePM1 rating



**CamGT**

- High efficiency, hydrophobic compact v-shaped filter
- F7, F8, F9, E10, E11, E12 rating
- ePM1 rating



**CamBrane**

- High efficiency, water and salt resistant cartridge filter
- HemiPleat technology
- E12 rating